

Examination Report

Part 2 Fellowship of the Royal College of
Ophthalmologists (FRCOphth) Oral
Examination

Manchester November 2024

Lucy Foard, Sian Williams, Kiran Sanghara

Contents

1	Summary.....	3
2	Candidates	3
3	The structured vivas.....	3
3.1	Results	4
3.2	Standard setting for the structured vivas	6
4	The objective structured clinical examination (OSCE)	7
4.1	Results	7
4.2	Standard setting for the OSCEs.....	9
5	Overall results for the oral examination	10
5.1	Results	10
5.2	Comparison to previous examinations and demographic analysis.....	11

1 Summary

The Part 2 Fellowship of the Royal College of Ophthalmologists (FRCOphth) oral examination consists of two elements. The objective structured clinical examination (OSCE) consists of six stations worth a total of 198 marks, whilst the structured viva consists of five stations worth a total of 120 marks. One of the OSCE stations is conducted with the vivas.

A total of 123 candidates sat the Manchester examination.

The pass mark for the structured viva was 73/120 and the pass mark for the OSCE was 121/198.

The reliability of the oral examination was 0.79 (Viva) and 0.84 (OSCE).

The pass rates for the viva and the OSCE were 77.2% (95/123) and 70.7% (87/123) respectively. The overall pass rate was 67.5% (83/123).

2 Candidates

A total of 123 candidates sat the examination.

3 The structured vivas

There were five structured vivas, which were held on the 11th and 12th of November. The communication skills OSCE station was conducted as one of the viva stations, making six stations in all (the OSCE station is not included in the analysis of the viva; it is merely administered at the same time). Each viva lasted 10 minutes. The viva stations were:

- | | |
|------------|---|
| Station 1: | Patient investigations and data interpretation |
| Station 2: | Patient management 1 |
| Station 3: | Patient management 2 |
| Station 4: | Attitudes, ethics and responsibilities. |
| Station 5 | Audit, research and EBM and Health promotion and disease prevention |

3.1 Results

Maximum mark (five stations, two examiners per station, 24 marks per station): 120

Table 1: Marks for the viva

Statistic	Value	Percentage
Pass mark (using borderline candidate method)	67 / 120	55.8%
Mean score	81.99	68.3%
Standard deviation	13.21	11.0%
Median score	83.00	69.2%
Range	33 – 113	27.5% - 94.2%
Reliability (Cronbach's alpha)	0.791	
SEM (rounded)	6.04 (6)	5.0%
Final adjusted pass mark (+1 SEM)	73 / 120	60.8%
Pass rate after adjustment (pass mark = 73)	95 / 123	77.2%

**Please note that the final pass rate presented reflects any adjustments to candidates' scores. All other analyses are based on original, unadjusted data.*

Figure 1: Distribution of viva scores (red line denotes pass mark)

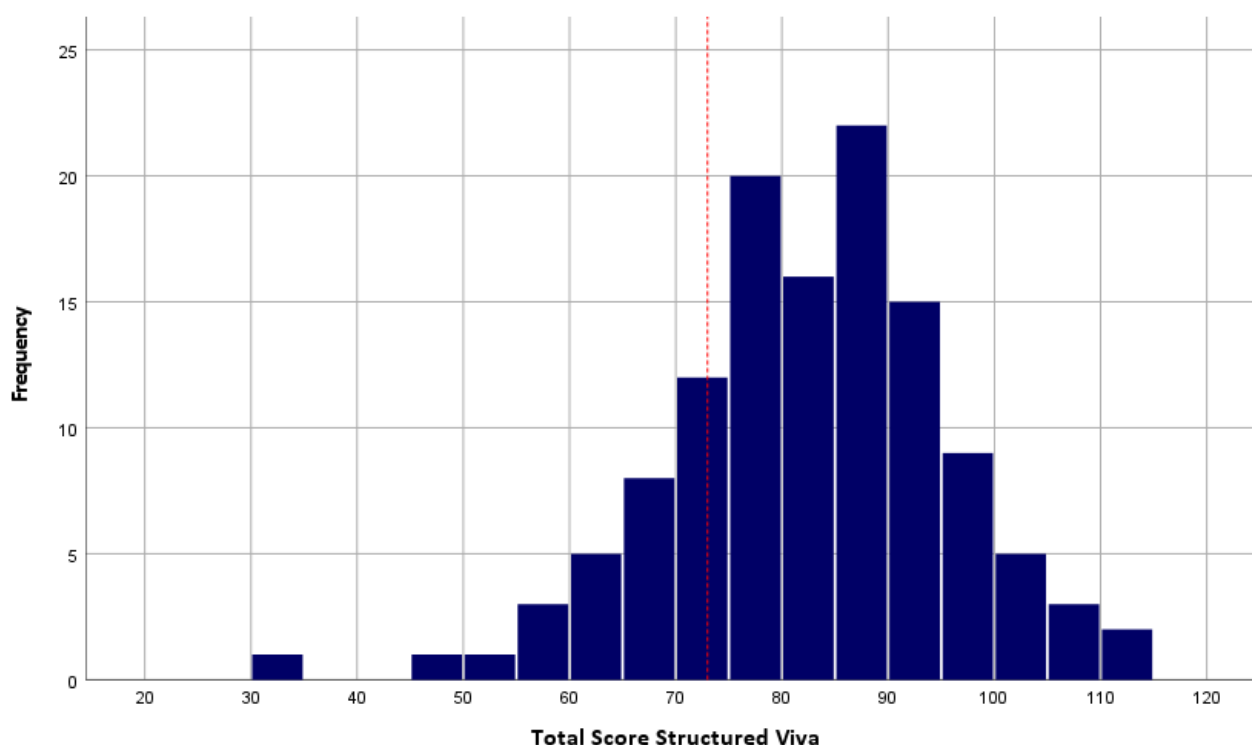


Table 2: Station summary — viva

Station	Category	Maximum possible	Mean	Median	Min	Max
1	PI	24	18.9	19.0	4	24
2	PM1	24	17.3	18.0	6	24
3	PM2	24	18.1	19.0	6	24
4	AER	24	12.6	13.0	3	22
5	HPDP/EBM	24	15.2	14.0	4	24

Table 3: Correlation between examiners' marks at each station

Station	Station 1	Station 2	Station 3	Station 4	Station 5
Category	PI	PM1	PM2	AER	HPDP/EBM
Correlation	0.82	0.89	0.87	0.91	0.85

Table 4: Mean absolute difference in examiners' marks at each station

Station	Station 1	Station 2	Station 3	Station 4	Station 5
Category	PI	PM1	PM2	AER	HPDP/EBM
Mean absolute difference*	0.98	0.67	0.80	0.80	0.73

*The 'mean absolute difference' is the average difference between Examiner A and Examiner B scores for each station

Table 5: Correlation between viva stations

	Station 1	Station 2	Station 3	Station 4	Station 5
Station 1					
Station 2	0.18*				
Station 3	0.22*	0.24*			
Station 4	-0.02	0.18*	0.22*		
Station 5	0.24*	0.26*	0.25*	0.38	

* Statistically significant $p \leq .05$

3.2 Standard setting for the structured vivas

Table 6: Viva standard setting

	Station 1		Station 2		Station 3		Station 4		Station 5		Total
Number of passed candidates	84	90	89	85	79	84	44	48	60	66	
Number of borderline candidates	34	28	22	27	26	26	44	43	46	43	
Number of failed candidates	5	5	12	11	18	13	35	32	17	14	
Median borderline candidate mark	7.5	7	6.5	7	7	7	6	6	7	6	67

4 The objective structured clinical examination (OSCE)

There were six OSCE stations in all. The five clinical stations were held on different days to the Vivas (OSCE Station 6 held with the Vivas), on the 13th, 14th and 15th of November. The OSCE stations were:

- Station 1:** Anterior Segment
- Station 2:** Glaucoma and Lid
- Station 3:** Posterior Segment
- Station 4:** Strabismus and Orbit
- Station 5:** Neuro-ophthalmology
- Station 6:** Communication Skills (takes place logistically with viva aspect of the exam)

4.1 Results

Table 7: Marks for the OSCE

Statistic	Value	Percentage
Pass mark (using borderline candidate method)	112 / 198	56.6%
Mean score	130.89	66.1%
Standard deviation	23.73	12.0%
Median score	132.00	66.7%
Range	63 – 178	31.8% - 89.9%
Reliability (Cronbach's alpha)	0.841	
SEM (rounded)	9.46 (9)	4.78%
Final adjusted pass mark (+1 SEM)	121 / 198	61.1%
Pass rate after adjustment (pass mark 121)	87 / 123	70.7%

**Please note that the Final pass rate is presented, that includes any adjustments. All other analysis is based on original, unadjusted data.*

Figure 2: Distribution of OSCE scores (red line denotes pass mark)

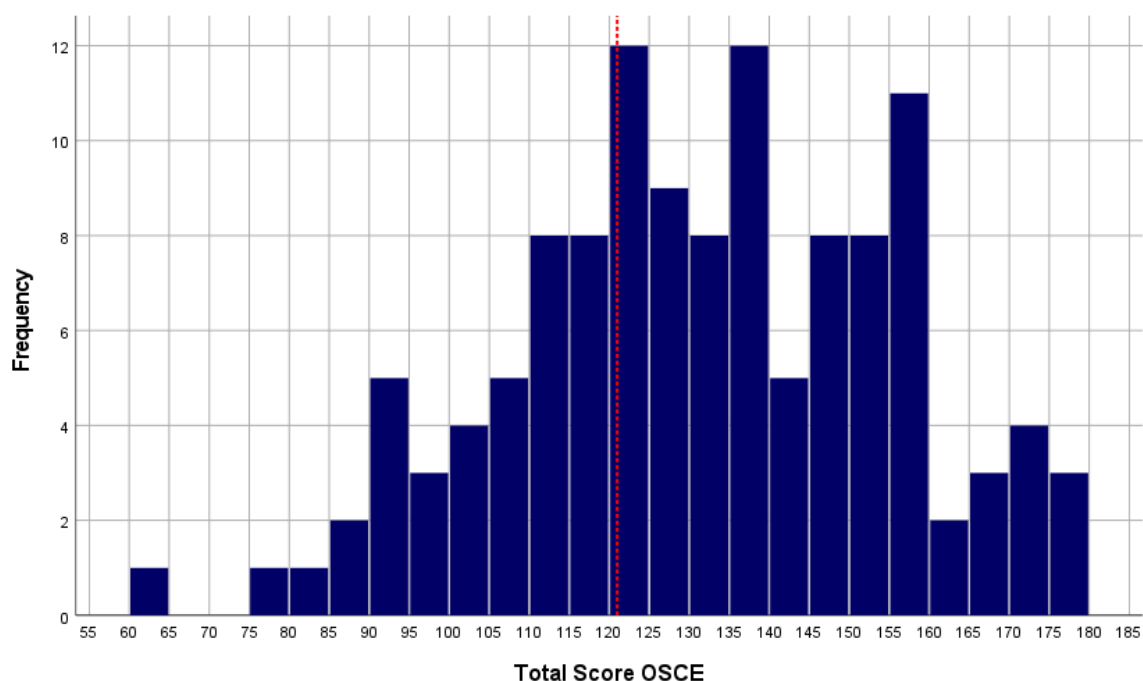


Table 8: Station Summary — OSCE

Station	Category	Maximum Possible	Mean	Median	Min	Max
1	Anterior segment	36	23.5	24.0	1	36
2	Glaucoma and lid	36	24.0	24.0	7	36
3	Posterior segment	36	23.6	25.0	8	36
4	Strabismus and orbit	36	22.2	22.0	2	36
5	Neuro-ophthalmology	36	25.6	26.0	9	36
6	Communication skills	18	11.9	12.0	0	18

Table 9: Correlation between examiners' marks at each station

Station	Station 1	Station 2	Station 3	Station 4	Station 5	Station 6
Category	Anterior segment	Glaucoma and lid	Posterior segment	Strabismus and orbit	Neuro-ophthalmology	Communication skills
Correlation	0.90	0.84	0.88	0.92	0.88	0.83

Table 10: Mean absolute difference in examiners' marks at each station

Station	Station 1	Station 2	Station 3	Station 4	Station 5	Station 6
Category	Anterior segment	Glaucoma and lid	Posterior segment	Strabismus and orbit	Neuro-ophthalmology	Communication skills
Mean absolute difference*	0.89	1.51	1.36	1.22	1.24	0.89

*The 'mean absolute difference' is the average difference between Examiner A and Examiner B scores for each station

Table 11: Correlation between OSCE stations

	Station 1	Station 2	Station 3	Station 4	Station 5	Station 6
Station 1						
Station 2	0.43*					
Station 3	0.21*	0.23*				
Station 4	0.22*	0.46*	0.20*			
Station 5	0.29*	0.29*	0.26*	0.25*		
Station 6	0.20*	0.40*	0.11	0.30*	0.21*	

* Statistically significant $p \leq .05$

4.2 Standard setting for the OSCEs

Table 12: OSCE standard setting

	Station 1		Station 2		Station 3		Station 4		Station 5		Station 6		Total
Number of passed candidates	77	82	63	65	63	67	63	64	68	77	67	69	
Number of borderline candidates	33	30	42	44	35	33	40	40	37	31	39	34	
Number of failed candidates	13	11	18	14	25	23	20	19	18	15	17	20	
Median borderline candidate mark	9	10	10.5	10	10	11	10	9	11	11	5	5	111.5 (112)

5 Overall results for the oral examination

5.1 Results

Table 13: Overall results summary

Statistics	Value	Percentage
Pass Mark	194 / 318	61.0%
Mean	213 / 318	67.0%
Median	212 / 318	66.7%
Range	122 - 291	38.4% – 91.5%

To pass the oral examination candidates had to either:

- i) pass both the viva (73/120 (%)) and OSCE (121/198 (%)) *or*
- ii) pass the OSCE, achieve 67/120 (55.8%) in the viva, and achieve $\geq 194/318$ (61.0%) overall.

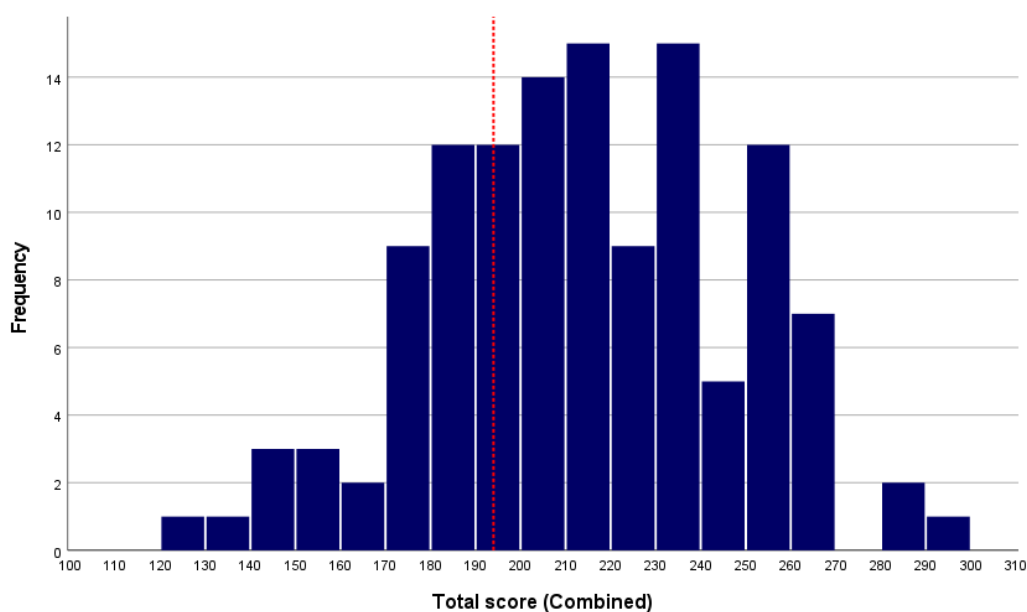
Overall, 83 of the 123 candidates sitting passed the Part 2 Oral examination this diet.

Table 14: Pass rates

Statistics	Value	Percentage
Overall pass rate for the oral examination	83 / 123	67.5%

There was a strong correlation between Structured viva total scores and OSCE total scores, of $r=0.63$.

Figure 3: Distribution of total scores (red line denotes overall pass mark)



5.2 Comparison to previous examinations and demographic analysis

Table 15: Comparison to previous examinations

Date	Candidates	Viva pass mark	Viva reliability	OSCE pass mark	OSCE reliability	Oral pass rate	Oral pass rate in OST
Nov-24 Manchester	123	61%	0.8	61%	0.8	67.5%	74%
Oct-24 Athens	3	63%	-	64%	-	67%	n/a
April - 24	143	63%	0.8	63%	0.8	75%	87%
Feb-24 Pakistan	2	63%	-	64%	-	100%	n/a
Jan-24 Singapore	14	67%	0.8	65%	0.5	71%	n/a
Nov-23 Cairo	16	63%	0.9	66%	0.7	75%	n/a
Nov-23 Dundee	99	62%	0.8	59%	0.8	71%	n/a
Oct-23 New Delhi	8	59%	0.9	60%	0.8	50%	n/a
Oct-23 Athens	11	62%	0.9	64%	0.7	46%	n/a
Jul -23	20	64%	0.8	65%	0.9	65%	n/a
Apr-23	158	65%	0.7	63%	0.8	61%	86%
Nov-22	120	64%	0.8	60%	0.8	62%	n/a
Apr-22	114	62%	0.7	63%	0.8	68%	91%
Nov-21	119	60%	0.6	61%	0.8	73%	85%
Apr-21	74	62%	0.7	64%	0.8	77%	84%
Mar-21	46	58%	0.8	60%	0.8	70%	94%
Nov-20	86	62%	0.4	64%	0.8	74%	85%
Nov-19	85	67%	0.7	60%	0.8	71%	80%
Apr-19	84	63%	0.6	64%	0.9	64%	79%
Nov-18	106	58%	0.8	64%	0.8	58%	74%
Apr-18	74	62%	0.8	60%	0.8	70%	80%
Apr-17	105	61%	0.8	63%	0.8	66%	82%
Nov-16	107	60%	0.8	63%	0.8	71%	84%
Apr-16	61	63%	0.8	63%	0.9	56%	69%
Nov-15	72	61%	0.8	62%	0.8	69%	86%
Apr-15	77	60%	0.9	60%	0.9	62%	80%
Nov-14	79	63%	0.8	62%	0.7	63%	70%
Apr-14	104	57%	0.8	61%	0.8	58%	65%
Apr-13	109	60%	0.8	63%	0.8	57%	56%
Nov-12	103	58%	0.9	61%	0.8	58%	64%

The MCQ examination has been de-coupled from the oral examination since April 2014

Table 16: Cumulative results by deanery (September 2010 to date; not including Nov 22 data)

Location	Deanery	Number of passes	Number of candidates	Pass rate (%)
UK	East Midlands	68	94	72.3
	East of England	85	140	60.7
	East of Scotland	14	15	93.3
	London and KSS (Kent, Surrey & Sussex)	362	473	76.5
	Mersey	73	99	73.7
	North of Scotland	14	22	63.6
	North East	1	1	100.0
	Northwestern	86	133	64.7
	Northern	72	91	79.1
	Northern Ireland	23	29	79.3
	Thames Valley (was Oxford)	57	68	83.8
	Peninsula (Southwest)	31	51	60.8
	Severn	53	68	77.9
	South East of Scotland	31	37	83.8
	Wales	53	84	63.1
	Wessex	47	78	60.3
	West Midlands	109	165	66.1
	West of Scotland	51	73	69.9
	Yorkshire and Humber	103	160	64.4
OS	Eire	4	5	80.0
	Europe and Overseas	57	105	54.3
	Other / Unknown	67	108	62.0
	<i>Total</i>	<i>1461</i>	<i>2099</i>	<i>69.6</i>

Table 17: Breakdown of results by demographic groups

Demographics	Passed	Total	Pass rate
Training grades			
OST3	2	3	66.7%
OST4	15	18	83.3%
OST5	11	18	61.1%
OST6	10	13	76.9%
OST7	4	5	80.0%
Not in training	41	66	62.1%
Ethnicity (grouped)			
Asian	36	54	66.7%
Black	0	1	0%
Mixed	1	3	33.3%
Other	3	8	37.5%
White	23	26	88.5%
Unknown	20	31	64.5%
PMQ			
OS	42	66	63.6%
UK	41	56	73.2%
Unknown	0	1	0%
Gender			
Female	28	43	65.1%
Male	43	61	70.5%
Unknown	12	19	63.2%
Attempt			
1 st Attempt	60	91	65.9%
2 nd Attempt	19	23	82.6%
3 rd Attempt	3	7	42.9%
4 th Attempt	n/a	n/a	n/a
5 th Attempt	1	2	50.0%