

# Examination Report

Part 2 Fellowship of the Royal College of  
Ophthalmologists (FRCOphth) Oral  
Examination

Cardiff April 2025

Lucy Foard, Sian Williams, Kiran Sanghara

---

# Contents

<b>1</b>	<b>Summary.....</b>	<b>3</b>
<b>2</b>	<b>Candidates .....</b>	<b>3</b>
<b>3</b>	<b>The structured vivas.....</b>	<b>3</b>
3.1	Results .....	4
3.2	Standard setting for the structured vivas.....	6
<b>4</b>	<b>The objective structured clinical examination (OSCE) .....</b>	<b>7</b>
4.1	Results .....	7
4.2	Standard setting for the OSCEs .....	9
<b>5</b>	<b>Overall results for the oral examination .....</b>	<b>10</b>
5.1	Results .....	10
5.2	Comparison to previous examinations and demographic analysis .....	11

---

# 1 Summary

---

The Part 2 Fellowship of the Royal College of Ophthalmologists (FRCOphth) oral examination consists of two elements. The objective structured clinical examination (OSCE) consists of six stations worth a total of 198 marks, whilst the structured viva consists of five stations worth a total of 120 marks. One of the OSCE stations is conducted with the vivas.

A total of 117 candidates sat the Cardiff examination.

The pass mark for the structured viva was 74/120 and the pass mark for the OSCE was 121/198.

The reliability values of the oral examination components were 0.83 (Viva) and 0.86 (OSCE).

The pass rates for the viva and the OSCE were 74.4% (87/117) and 70.1% (82/117) respectively. The overall pass rate was 67.5% (79/117).

# 2 Candidates

---

A total of 117 candidates sat the examination.

# 3 The structured vivas

---

There were five structured vivas, which were held on the 7<sup>th</sup> and 8<sup>th</sup> of April. The communication skills OSCE station was conducted as one of the viva stations, making six stations in all (the OSCE station is not included in the analysis of the viva; it is merely administered at the same time). Each viva lasted 10 minutes. The viva stations were:

- |            |   |
|------------|---|
| Station 1: | Patient investigations and data interpretation                      |
| Station 2: | Patient management 1  |
| Station 3: | Patient management 2  |
| Station 4: | Attitudes, ethics and responsibilities.                             |
| Station 5  | Audit, research and EBM and Health promotion and disease prevention |

### 3.1 Results

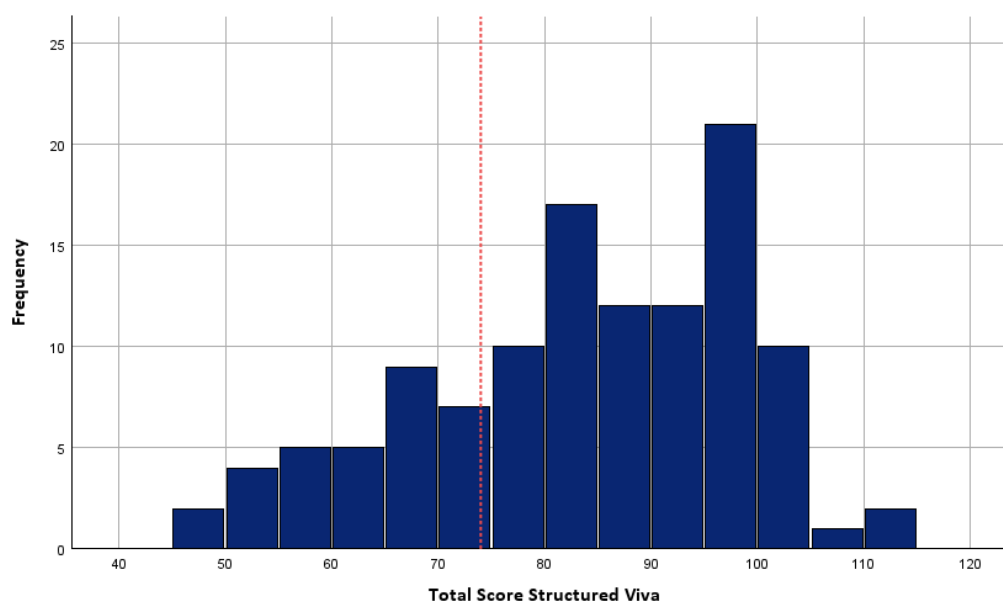
Maximum mark (five stations, two examiners per station, 24 marks per station): 120

**Table 1: Marks for the viva**

Statistic	Value	Percentage
Pass mark (using borderline candidate method)	68 / 120	56.7%
Mean score	83.03	69.2%
Standard deviation	15.11	12.6%
Median score	84.00	70.0%
Range	45 – 111	37.5% - 92.5%
Reliability (Cronbach's alpha)	0.834	
SEM (rounded)	6.16 (6)	5.1% (5.0%)
Final adjusted pass mark (+1 SEM)	74 / 120	61.7%
Pass rate after adjustment (pass mark = 74)	87 / 117	74.4%

*\*Please note that the final pass rate presented reflects any adjustments to candidates' scores. All other analyses are based on original, unadjusted data.*

**Figure 1: Distribution of viva scores (red line denotes pass mark)**



**Table 2: Station summary — viva**

Station	Category	Maximum possible	Mean	Median	Min	Max
1	PI	24	17.9	18.0	5	24
2	PM1	24	15.1	16.0	3	23
3	PM2	24	17.8	18.0	5	24
4	AER	24	16.3	17.0	2	24
5	HPDP/EBM	24	15.9	17.0	5	24

**Table 3: Correlation between examiners' marks at each station**

Station	Station 1	Station 2	Station 3	Station 4	Station 5
Category	PI	PM1	PM2	AER	HPDP/EBM
Correlation	0.89	0.93	0.89	0.91	0.94

**Table 4: Mean absolute difference in examiners' marks at each station**

Station	Station 1	Station 2	Station 3	Station 4	Station 5
Category	PI	PM1	PM2	AER	HPDP/EBM
Mean absolute difference*	0.82	0.69	0.82	0.84	0.71

\*The 'mean absolute difference' is the average difference between Examiner A and Examiner B scores for each station

**Table 5: Correlation between viva stations**

	Station 1	Station 2	Station 3	Station 4	Station 5
Station 1					
Station 2	0.22*				
Station 3	0.30*	0.28*			
Station 4	0.21*	0.06	0.55*		
Station 5	0.37*	0.25*	0.21*	0.32*	

\* Statistically significant  $p \leq .05$

## 3.2 Standard setting for the structured vivas

Table 6: Viva standard setting

	Station 1		Station 2		Station 3		Station 4		Station 5		Total
Number of passed candidates	81	72	64	69	85	85	61	66	66	62	
Number of borderline candidates	25	35	25	25	19	20	37	32	29	34	
Number of failed candidates	11	10	28	23	13	12	19	19	22	21	
Median borderline candidate mark	7	7	7	6	7	7	7	7	6	7	68

---

## 4 The objective structured clinical examination (OSCE)

---

There were six OSCE stations in all. The five clinical stations were held on different days to the Vivas (OSCE Station 6 held with the Vivas), on the 9<sup>th</sup>, 10<sup>th</sup> and 11<sup>th</sup> of April. The OSCE stations were:

**Station 1:** Anterior Segment

**Station 2:** Glaucoma and Lid

**Station 3:** Posterior Segment

**Station 4:** Strabismus and Orbit

**Station 5:** Neuro-ophthalmology

**Station 6:** Communication Skills (takes place logistically with viva aspect of the exam)

### 4.1 Results

*Table 7: Marks for the OSCE*

Statistic	Value	Percentage
Pass mark (using borderline candidate method)	112 / 198	56.6%
Mean score	130.09	65.7%
Standard deviation	24.59	12.4%
Median score	133.00	67.2%
Range	53 – 178	26.8% - 89.9%
Reliability (Cronbach's alpha)	0.857	
SEM (rounded)	9.30 (9)	4.7% (4.5%)
Final adjusted pass mark (+1 SEM)	121 / 198	61.1%
Pass rate after adjustment (pass mark 121)	82 / 117	70.1%

*\*Please note that the Final pass rate is presented, that includes any adjustments. All other analysis is based on original, unadjusted data.*

Figure 2: Distribution of OSCE scores (red line denotes pass mark)

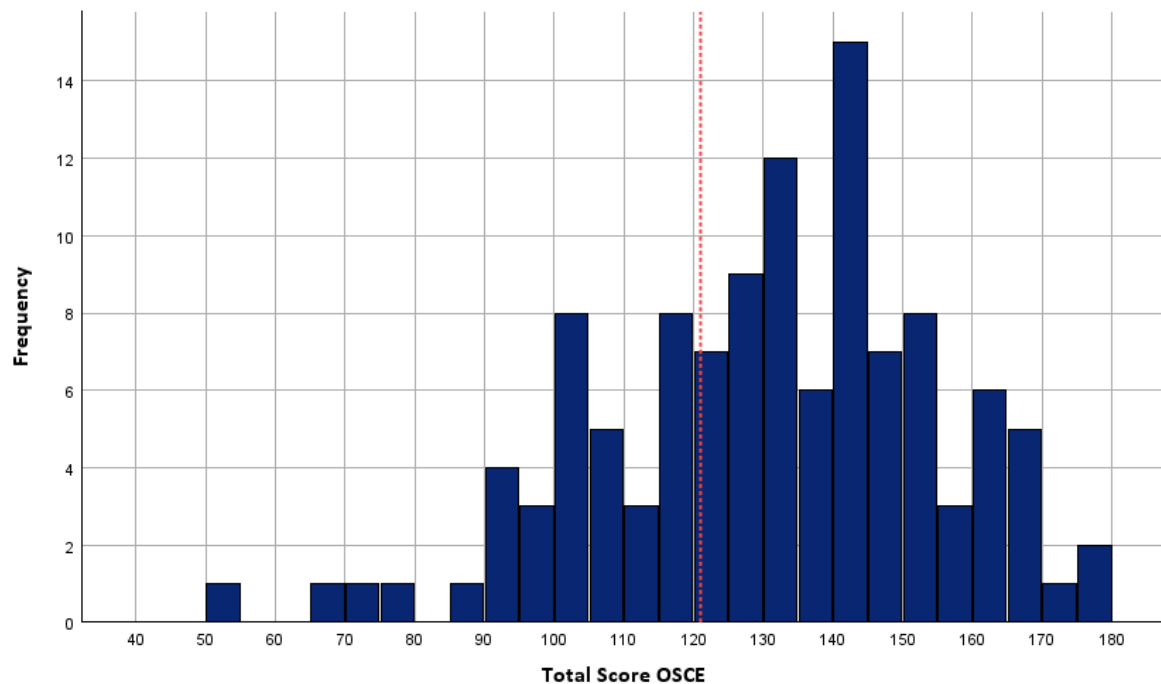


Table 8: Station Summary — OSCE

Station	Category	Maximum Possible	Mean	Median	Min	Max
1	Anterior segment	36	23.4	24.0	6	35
2	Glaucoma and lid	36	27.4	29.0	6	36
3	Posterior segment	36	22.3	22.0	3	36
4	Strabismus and orbit	36	21.0	21.0	3	36
5	Neuro-ophthalmology	36	24.0	25.0	7	35
6	Communication skills	18	12.0	12.0	0	18

Table 9: Correlation between examiners' marks at each station

Station	Station 1	Station 2	Station 3	Station 4	Station 5	Station 6
Category	Anterior segment	Glaucoma and lid	Posterior segment	Strabismus and orbit	Neuro-ophthalmology	Communication skills
Correlation	0.88	0.89	0.90	0.95	0.88	0.90



Table 10: Mean absolute difference in examiners' marks at each station

Station	Station 1	Station 2	Station 3	Station 4	Station 5	Station 6
Category	Anterior segment	Glaucoma and lid	Posterior segment	Strabismus and orbit	Neuro-ophthalmology	Communication skills
Mean absolute difference*	1.20	1.11	1.22	0.92	1.29	0.66

\*The 'mean absolute difference' is the average difference between Examiner A and Examiner B scores for each station

Table 11: Correlation between OSCE stations

	Station 1	Station 2	Station 3	Station 4	Station 5	Station 6
Station 1						
Station 2	0.17					
Station 3	0.36*	0.19*				
Station 4	0.22*	0.28*	0.36*			
Station 5	0.26*	0.40*	0.30*	0.27*		
Station 6	0.28*	0.34*	0.40*	0.30*	0.42*	

\* Statistically significant  $p \leq .05$

## 4.2 Standard setting for the OSCEs

Table 12: OSCE standard setting

	Station 1		Station 2		Station 3		Station 4		Station 5		Station 6		Total
Number of passed candidates	53	55	87	91	48	50	54	55	54	65	70	74	
Number of borderline candidates	40	39	17	13	41	43	24	29	35	33	28	26	
Number of failed candidates	24	23	13	13	28	24	39	33	28	19	19	17	
Median borderline candidate mark	11	11	10	9	10	10	10	10	11	11	5	4	112

## 5 Overall results for the oral examination

### 5.1 Results

Table 13: Overall results summary

Statistics	Value	Percentage
Pass Mark	195 / 318	61.3%
Mean	213 / 318	67.0%
Median	218 / 318	68.6%
Range	110 - 288	34.6% - 90.6%

To pass the oral examination candidates had to either:

- i) pass both the viva (74/120 (61.7%)) and OSCE (121/198 (61.1%)) *or*
- ii) pass the OSCE, achieve 68/120 (56.7%) in the viva, and achieve  $\geq 195/318$  (61.3%) overall.

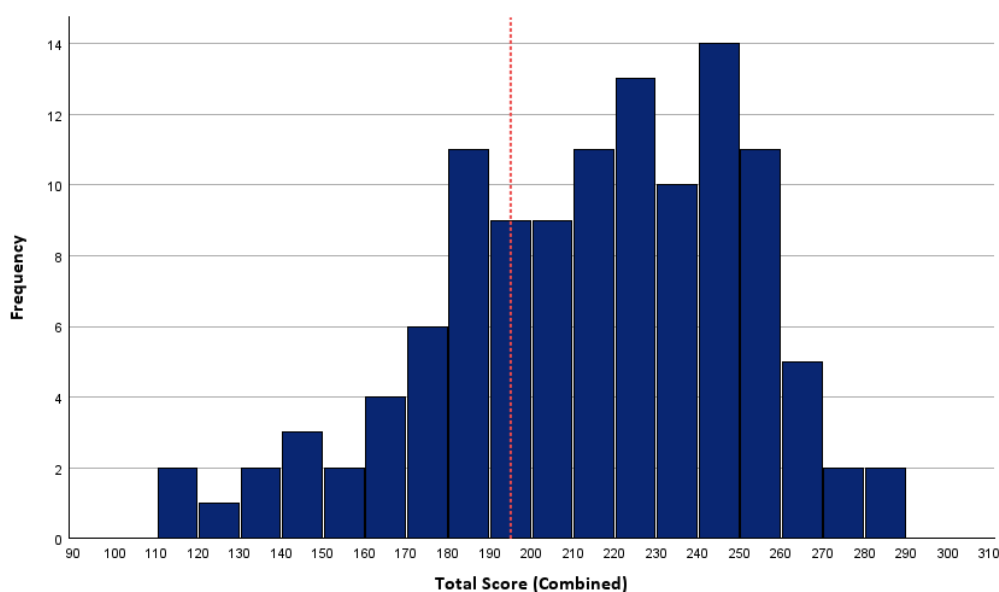
Overall, 79 of the 117 candidates sitting passed the Part 2 Oral examination this diet.

Table 14: Pass rates

Statistics	Value	Percentage
Overall pass rate for the oral examination	79 / 117	67.5%

There was a strong correlation between Structured viva total scores and OSCE total scores, of  $r=0.73$ .

Figure 3: Distribution of total scores (red line denotes overall pass mark)



## 5.2 Comparison to previous examinations and demographic analysis

Table 15: Comparison to previous examinations

Date	Candidates	Viva pass mark	Viva reliability	OSCE pass mark	OSCE reliability	Oral pass rate	Oral pass rate in OST
<b>April-25 Cardiff</b>	<b>117</b>	<b>62%</b>	<b>0.8</b>	<b>61%</b>	<b>0.9</b>	<b>67.5%</b>	<b>93%</b>
Feb-25 Dubai	11	65%	0.8	67%	-	45.5%	n/a
Jan-25 Mumbai	5	59%	-	59%	-	100%	n/a
Jan-25 Singapore	8	66%	0.6	67%	0.6	87.5%	n/a
Nov-24 Cairo	11	64%	0.9	64%	0.9	72.7%	n/a
Nov-24 Manchester	123	61%	0.8	61%	0.8	68%	74%
Oct-24 Athens	3	63%	-	64%	-	67%	n/a
April-24 London	143	63%	0.8	63%	0.8	75%	87%
Feb-24 Pakistan	2	63%	-	64%	-	100%	n/a
Jan-24 Singapore	14	67%	0.8	65%	0.5	71%	n/a
Nov-23 Cairo	16	63%	0.9	66%	0.7	75%	n/a
Nov-23 Dundee	99	62%	0.8	59%	0.8	71%	n/a
Oct-23 New Delhi	8	59%	0.9	60%	0.8	50%	n/a
Oct-23 Athens	11	62%	0.9	64%	0.7	46%	n/a
Jul -23	20	64%	0.8	65%	0.9	65%	n/a
Apr-23	158	65%	0.7	63%	0.8	61%	86%
Nov-22	120	64%	0.8	60%	0.8	62%	n/a
Apr-22	114	62%	0.7	63%	0.8	68%	91%
Nov-21	119	60%	0.6	61%	0.8	73%	85%
Apr-21	74	62%	0.7	64%	0.8	77%	84%
Mar-21	46	58%	0.8	60%	0.8	70%	94%
Nov-20	86	62%	0.4	64%	0.8	74%	85%
Nov-19	85	67%	0.7	60%	0.8	71%	80%
Apr-19	84	63%	0.6	64%	0.9	64%	79%
Nov-18	106	58%	0.8	64%	0.8	58%	74%
Apr-18	74	62%	0.8	60%	0.8	70%	80%
Apr-17	105	61%	0.8	63%	0.8	66%	82%
Nov-16	107	60%	0.8	63%	0.8	71%	84%
Apr-16	61	63%	0.8	63%	0.9	56%	69%
Nov-15	72	61%	0.8	62%	0.8	69%	86%
Apr-15	77	60%	0.9	60%	0.9	62%	80%
Nov-14	79	63%	0.8	62%	0.7	63%	70%
Apr-14	104	57%	0.8	61%	0.8	58%	65%
Apr-13	109	60%	0.8	63%	0.8	57%	56%
Nov-12	103	58%	0.9	61%	0.8	58%	64%
The MCQ examination has been de-coupled from the oral examination since April 2014							

Table 16: Cumulative results by deanery (September 2010 to date; not including Nov 22 data)

Location	Deanery	Number of passes	Number of candidates	Pass rate (%)
UK	East Midlands	69	95	72.6
	East of England	94	150	62.7
	East of Scotland	14	15	93.3
	London and KSS	380	491	77.4
	Mersey	74	100	74.0
	North of Scotland	16	24	66.7
	North East	1	1	100.0
	Northwestern	88	135	65.2
	Northern	73	92	79.3
	Northern Ireland	24	30	80.0
	Thames Valley (was Oxford)	61	72	84.7
	Peninsula (Southwest)	31	51	60.8
	Severn	55	70	78.6
	South East of Scotland	31	37	83.8
	Wales	55	86	64.0
	Wessex	49	80	61.3
	West Midlands	113	169	66.9
	West of Scotland	54	76	71.1
	Yorkshire and Humber	109	170	64.1
OS	Eire	5	6	83.3
	Europe and Overseas	69	119	58.0
N/A	Other / Unknown	100	182	54.9
TOTAL	<b>Total</b>	<b>1560</b>	<b>2246</b>	<b>69.5</b>

Table 17: Breakdown of results by demographic groups

Demographics	Passed	Total	Pass rate
<b>Training grades</b>			
OST3	10	10	100%
OST4	21	23	91.3%
OST5	16	17	94.1%
OST6	9	9	100%
OST7	0	1	0%
Not in training	22	55	40.0%
N/A	1	2	50.0%
<b>Ethnicity (grouped)</b>			
Asian / Asian British	22	37	59.5%
Black / Black British	0	1	0%
Chinese	4	7	57.1%
Mixed	3	5	60.0%
Other	12	17	70.6%
White	15	16	93.8%
Unknown	23	34	67.6%
<b>PMQ</b>			
OS	24	56	42.9%
UK	54	59	91.5%
Unknown	1	2	50.0%
<b>Gender</b>			
Female	23	39	59.0%
Male	34	46	73.9%
Unknown	22	32	68.8%
<b>Attempt</b>			
1 <sup>st</sup> Attempt	63	90	70.0%
2 <sup>nd</sup> Attempt	14	21	66.7%
3 <sup>rd</sup> Attempt	1	5	20.0%
4 <sup>th</sup> Attempt	1	1	100%